

# Great Linford Parish Council News & Views

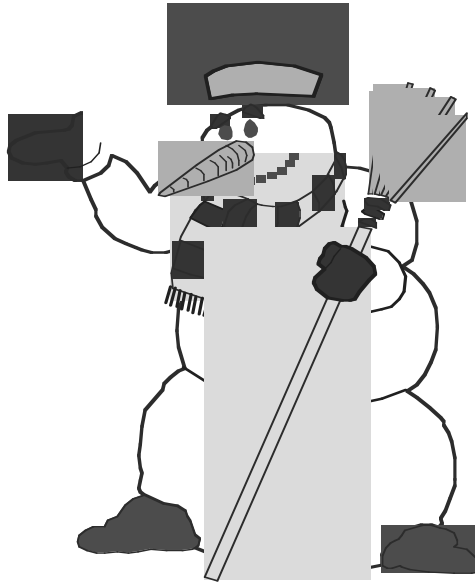
Issue Four

December 2003

## Dear Residents

Welcome, once again, to the Great Linford Parish Council News & Views. Christmas and all that the festive season entails is upon us once again. I can't be the only one that thinks this year has passed quickly!

There are a number of issues that you have brought to our attention over the year and we hope you will continue to do so. One in particular recently is the proposed extra care village on the site of the former Japanese school at Willen. We have received feedback from a variety of sources both in favour and against this development. Personally I think it is sad to have to choose when there is enough land available in Milton Keynes to build not just one village but two or three and to keep the school as a school (for which an offer was made a very short while ago but I believe refused). Whilst the Parish Council applauds the extra care concept we would like to hear your views on this matter. Please write to Jenny Sharp (Parish Clerk)



regarding this and any other issue to the contact details inside.

Following the great success of our St. Valentine's Day Dance we are holding a Christmas Dance with Buffet on Saturday 13th December 2003. We hope to see some of you there again, details can be found inside.

Finally, on behalf of everyone at Great Linford Parish Council, I would like to wish you all a Happy Christmas and above all at this time a Peaceful New Year.

*Cllr Claudine Elliott  
Chair, Great Linford Parish Council*

## Inside this issue...

GLPC Law .....	2
Parish Broadband .....	2
Allotment Show .....	4
Waterside Festival .....	9
Is there a HMO near you? ....	10

This publication is not affiliated with any other group or organisation, whether political, religious or



## GLPC LAW

PC Dave Monkhouse is the Community Officer for Conniburrow and Downs Barn. He is in regular contact with the Parish Council and both Residents Associations on the two estates. He can be contacted at Central Milton Keynes Police Station on 01908 686000 or you can email: [dave.monkhouse@thamesvalley.pnn.police.uk](mailto:dave.monkhouse@thamesvalley.pnn.police.uk)

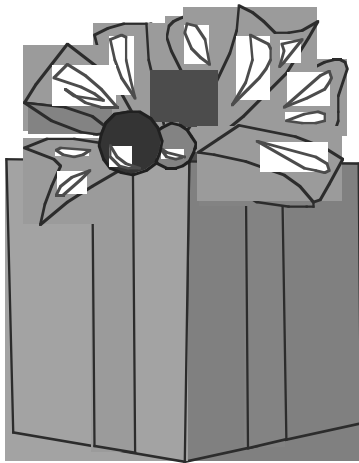
### Pavement Parking

There has been a marked improvement with the parking of vehicles on pavements in quite a few streets on Conniburrow and Downs Barn, although there are still a number of streets letting both estates down.

I will continue to monitor the situation over the coming weeks and hope that it will improve - parking on pavements is an of fence.

Thanks for your co-operation.

PC 3436 Dave Monkhouse,  
Community Beat Officer



## SOMETHING TO SAY?

If you have any material for the GLPC News & Views (next Issue published March 2004) then email it to ["editor@greatlinfordparish.co.uk"](mailto:editor@greatlinfordparish.co.uk) or post it to: News & Views, 32 Sandy Close, Great Linford MK14 5EE

## PARISH BROADBAND

**The Problem:** Broadband Internet access is not available in 30% of Milton Keynes. Coverage is particularly poor across a broad swathe of Milton Keynes from Loughton in the west, through Great Linford in the north, to Middleton in the east. This is incredible!

The best BT can offer is Home Highway at a very slow 128 kbps. Milton Keynes is a new town! Why do we have to live in the dark ages?

**The Solution:** A local campaign group for Broadband has been formed. They succeeded in getting Broadband into Monkston and have now expanded to become the Milton Keynes Broadband Action Group, focussing on the whole of Milton Keynes.

If you live in Milton Keynes, and want Broadband, then maybe you should consider joining this organisation! It is only by campaigning that solutions can be found that satisfy local internet surfers. You can visit the group's website at: <http://www.bb4mk.org>. The group is open to anybody that lives in Milton Keynes and wants to improve their internet access.

## TOP TEN DOG MESS AREAS

Following complaints from residents, these are currently the top four areas in the parish for dog fouling:

Pelham Place, Downs Barn

Florin Close, Pennyland

Verdon Drive, Willen Park

Currier Drive, Neath Hill  
(by St Monicas School)

These sites are currently being watched in order that the people allowing their dogs to foul, can be apprehended.

## NEIGHBOURHOOD WARDENS

Cllr Peter Billups puts forward a suggestion:

I believe the council should look at the provision of Street or Neighbourhood Wardens. They would tackle environment problems such as graffiti, dumped rubbish, overflowing bins, litter etc. Not to remove these themselves, but to let MK Council know where these things are happening so they can be dealt with quickly. Also, they could investigate complaints and take them up with appropriate organisations. If there is anything of a suspicious nature, they could contact the area beat officer. They could organise (or give) talks to school children and community groups about issues like graffiti or road safety.

If you support the idea of Neighbourhood Wardens let Cllr Billups know (you can contact him through the Parish Clerk).

Advertisement removed because  
of legal restrictions regarding  
advertising on the internet

## ALLOTMENT SHOW

On 7th September, the recently formed Great Linford Parish Allotments Association held their first Produce Show. This event was a great success and something the association intends to continue annually. The winner of the Best Kept Allotment was Mr B Nadal, with Mr Palmer taking second place, both are plotholders on the Neath Hill site. The picture shows Mr Melton (Hills Close site), receiving his shield for the Highest Number of Points in the Show, from Mr Brian White MP. Meetings of the association are held on the fourth Tuesday of each month, in the Cricket Pavilion, High Street, Great Linford at 7.30pm. All plotholders are welcome to attend.

Jenny Sharp (Parish Clerk)



Brian White presents the trophy for "Highest Number of Points in Show" to Mr Melton



Advertisement(s) removed because  
of legal restrictions regarding  
advertising on the internet

# YOUR PARISH COUNCILLORS

Not sure who to talk to about your area? Here are the members of Great Linford Parish Council and their contact details.

- |   |   |
|---|---|
| 1. Charles Allum (Downs Barn) 668115          | 670609  |
| 2. Allan Pugh (Downhead/Willen Pk) 662441     | 11. Peter Billups (Great Linford) 201513          |
| 3. Mike Pendry (Great Linford) 660929         | 12. Claudine Elliott (Chair, Conniburrow) 660929  |
| 4. Brian Morsley (Downhead/Willen Pk) 666054  | 13. Sue Williams (Conniburrow) 690337             |
| 5. Alan Williams (Neath Hill) 677402          | 14. Jenny Sharp (Parish Clerk) 217752             |
| 6. David Stabler (Neath Hill) 232025          | Unpictured (due to absence or aesthetic reasons): |
| 7. David Lovesy (Pennyland/Bolbeck Pk) 605502 | Allan Wright (Downs Barn) 666926                  |
| 8. Mike Williamson (Great Linford) 605664     | John Figg (Great Linford) 666916                  |
| 9. Colin Tripp (Giffard Pk/Blakelands) 618304 | Lin Shaw (Pennyland/Bolbeck Pk) 678563            |
| 10. Gill Hobson (Giffard Pk/Blakelands)       | George Byfield (Conniburrow) 604063               |



To contact the Parish Clerk, Jenny Sharp, please telephone 01908 217752 or write to PO Box 7085, Kiln Farm, Milton Keynes MK13 0YA

Advertisement(s) removed because  
of legal restrictions regarding  
advertising on the internet

# RECREATIONAL FACILITIES

Within the Great Linford Parish, we have three sports areas:

**High Street-Great Linford:** The cricket ground is used each weekend during the summer by three cricket teams, who also use the facilities provided in the pavilion. The pavilion is also available for meetings and childrens parties, with a maximum number of 60 persons.

**Marsh Drive-Great Linford:** This consists of four football pitches currently used during the winter by one adult team and a number of Great Linford Football Club youth teams. During the summer months cricket is played by two local teams, New City Cricket Club and Great Linford Cricket Club. The tennis courts are available for hire via Great Linford Tennis Club, full membership is also available through them.

**Downs Barn Sports Centre:** This facility has one full size, one junior and two nursery 7 size football pitches, currently used during the season by Downs Barn Football Club. There are also Tennis Courts for public usage. The pavilion is available for hire for meetings, childrens parties although it should be noted that the room is on the first floor and may not be suitable for very young children and those who have problems with stairs.

For further information on the above facilities, please contact the Parish Clerk on 01908 217752, during office hours.



Cllr David Stabler continues to research the grid square names and main road names with historical connections.

Bolbeck Park is named after Hugh de Bolbeck who was the Norman holder of the Manor of Linford in 1066. The street names are based on Norman history associated with William the Conqueror, i.e. Orne Gardens, from Orne river in Normandy, Redvers Gate, after Baron Richard de Redvers.

Pennyland takes its name from Penniland furlong barley field alongside the road from the Great Linford village to Willen, on the 1641 Parish Map of Great Linford. The theme for the road names is old coins, i.e. Sovereign Drive - gold coin worth one pound  
Stirling  
Bodle Close - 2 Scots pence, Carolus  
C r e e k  
- 23 shillings,

Campion. Queen Elizabeth 1 granted the manor to Richard Campion and John Thompson in 1560. William Campion owned a house and land in the village around 1600, and in 1640 Sir Richard Napier bought the estate from John Thompson. See notes on Sandy Close in the June 2003 issue of News & Views.

St Ledger Drive. Dates from the 15th Century when the Lord of the Manor, Sir James St Ledger, married Ann Butler, the Great Linford Heiress. His grandson, John St ledger was obliged by Henry VIII to exchange Great Linford for certain Abbey lands in Devon.

# GREAT LINFORD CHARITIES

Cllr Mike Williams draws your attention to two excellent causes:

The following Charities are available to help individuals residing within the Parish area. The Charities were set up many years ago and although they have limited funds they are still active and can provide some assistance to those in need.

The Parish area includes the following grid squares: Great Linford, Giffard Park, Blakelands, Neath Hill, Pennyland, Bolbeck Park, Tongwell, Conniburrow, Downs Barn, Downhead Park & Willen Park.

As funds are restricted the maximum amount that can be provided will not normally exceed £200. All applications received will be dealt with in strict confidence.

## Great Linford Advancement in Life Charity

The above Charity exists to assist with financial help, those persons under the age of 25 years. Grants are considered for educational purposes to include social and physical training, scholarships or bursaries for entry to university or other educational establishments. This could include clothing, tools, musical instruments or books to help with the applicant's education as well as assistance with travel in the furtherance of studies within an educational establishment.

## Great Linford Relief in Need Charity

This Charity can provide some help to those within the Parish area who are in severe financial difficulties and each case is taken on its merits.

For further details on the above please contact the Charities Secretary Mr Ted Pawley on MK 661049 who will be pleased to advise you further.

# WATERSIDE FESTIVAL



18/19/20  
June 2004

Come and get involved with  
the Great Linford  
Waterside Festival;  
...your festival!

Local volunteers with the support of various organisations make it happen. We need volunteers now to help in a variety of ways to organise the festival.

We also need people who will commit to such things as helping build the stages and erecting tents and serving food and drink during the festival.

Visit our website for details.

[www.watersidefestival.co.uk](http://www.watersidefestival.co.uk)

You can e-mail us there to register your interest or write c/o David Lovesy, 32 Sandy Close, Gt Linford, Milton Keynes MK14 5EE

Look out for updates in future issues of News and Views.

Mike Gist, Chair

# 252400

Is the number for the new

Safer Communities Unit in  
Milton Keynes

Milton Keynes Council has launched a one stop response unit to deal with all forms of anti-social behaviour. The multi-agency team of Street Crime Wardens Thames Valley Police Officers and Milton Keynes Council Officers will work together in one office to deal with traveller liaison, abandoned vehicles, graffiti, anti-social behaviour, flytipping and bill posting.

A state-of-the-art mobile CCTV system will be employed to detect and prevent crime and vandalism. Street Crime Wardens linked to Parish Community Safety Officers will patrol in Central Bletchley, Fullers Slade and Greenleys, Fishermead and Wolverton. TVP will co-ordinate anti-social behaviour strategies with the help of housing and environmental health agency staff

Great Linford Parish Council has lobbied for some time for a Safer Communities Unit to be set up and believes that it will greatly assist responses to anti-social behaviour and resolve some difficult situations in an innovative and imaginative way.

FLY TIPPING TRAVELLER LIAISON  
ABANDONED VEHICLES GRAFFITI  
ANTI-SOCIAL BEHAVIOUR  
FLYPOSTING

Please report any problems to 252400

HELP KEEP GREAT  
LINFORD PARISH  
CLEAN & SAFE

## IS THERE A HMO NEAR YOUR HOME?

What on earth, you may ask, is HMO and why should I worry about it?

Well, it is short for a House in Multiple Occupation and that could mean that perhaps 20 unrelated people are living together and all paying rent in one four bedroom house designed for a single family somewhere along your street.

Standard family homes are bought at a premium and then converted into multiple let rooms, a HMO, by absentee landlords. Sometimes even the garage is converted into a bed-sit. Most HMOs are converted without the addition of a separate kitchen, toilet or bathroom for each tenancy. Neither are extra facilities provided for the additional refuse generated or the parking of tenant's cars.

The number and location of HMOs and the standards of the facilities provided for the occupants is not easy to establish, although Milton Keynes Council [MKC] are responsible for monitoring the standards and giving planning permission for the conversion.

Under the Housing Act 1985 and the Local Government Act 1989, MKC has brought in a compulsory Registration Scheme, which enables the introduction of an inspection regime and the application of minimum conditions. These Regulations were designed to benefit and protect the tenants, reduce risks such as fire and aid the planning and control of the environment.

The unplanned, unregulated conversion of family dwellings into HMOs by unscrupulous and exploitative landlords would, if allowed to continue unchecked without standards and control, undoubtedly lead to the destruction of the social cohesion of an area, be it a row of homes, a street or a neighbourhood. It would in those places extinguish the essential goals of freedom of choice and balance and variety upon which Milton Keynes was designed and built. Once converted they are no longer suitable as family homes, thus diluting the pool of available houses to buy.

Great Linford Parish Council is very concerned about the conversion of these family homes into HMOs, the facilities provided for those in occupation, potential over-crowding, and the overall effect this has on other home occupiers in the area.

Concerns raised about HMOs should not be interpreted, as anti immigrant or racist, they are not. Standards and registration are the tools, which can be used to stamp out and deter potential Industrial Revolution type housing conditions and a resurgence of Rachmanism in the 21st Century. Properly converted and regulated HMOs may be a necessary response to market conditions. HMOs that develop unregulated and without minimum environmental standards will encourage social exclusion and thwarted ambition. Exploited tenants will be locked into a situation where there is no clear pathway out of the conditions they find themselves in, imagine where that could lead?

Parish Councils such as Great Linford have pressed for the setting of minimum standards for, and the registration of, all HMO's by MKC. MKC has at last introduced a landlord's registration scheme. Progress is being made and

your Parish Council will continue to press MKC to enforce the compulsory registration scheme and rigorously inspect all HMOs.

Is there a HMO near your home and you are concerned about it? If you are a concerned resident, or a member of a Residents Associations pass details of a suspected HMO to the HMO HOTLINE on MK 253 271.

Ideally a report about a suspected HMO should give the HMO address, Landlords name and contact details. A second best option is the HMO address and a tenants name and contact details. The last option but still one upon which MKC can act is just the suspected HMO address but please do not place yourself at any risk in trying to identify a HMO.

HMO HOTLINE  
253271



# THE HISTORY OF PARISH COUNCILS

Parish Councils have their origins, 1000 or more years ago during Saxon and Norman times, in the development of villages, all over England. The Lord of the Manor's writ ruled in villages, because communications were poor and central government often weak, there was little national control. Sometimes all villagers met to make decisions, if they affected the whole community. Gradually, the Parish Priest and sometimes the Schoolmaster joined the Lord of the Manor to become the ruling clique, because in smaller villages they were perhaps the only people who could read and write. It was probably they who became the first effective Parish Councils.

By the Year 1601, Church Vestry Meetings were so organised and workable that it was quite natural for legislators to give them the responsibility of levying the poor rate. These were the first effective local taxes. Everyone in the parish was entitled to attend Church Vestry Meetings but in practice the work fell to a few individuals, rather like Parish Councils today.

Although the 1834 Poor Law Amendment Act removed from Parish Vestries the responsibility for poor relief and handed it to Poor Law Unions - these were the origins of our present District Councils. Parishes had in many cases accumulated responsibility for administering local charities and managing common land under the distribution of land as a consequence of the 18th Century Enclosure Acts

In 1894 although the Squire, the Parson and sometimes the Schoolmaster were still the leaders in the village, education was available to more people and many wanted their own say in managing local affairs.

In 1894 Gladstone piloted the Local Government Act through the House of Commons. This met with a lot of opposition, for example over eight hundred amendments were moved during its passage through the House. Nevertheless, the Act became law and Parish Councils were formed.

Under the 1894 Act, Parish Councils were to receive their income from rates levied on agricultural land, but this was a time of agricultural depression and the money raised was small, and soon this system was abandoned. Rates were to be raised from householders, something householders had little experience of before, except for the hearth tax, and this led to more public opposition to Parish Councils. It was not until after the First World War that Central Government began to give serious responsibilities to Parish Councils - the earliest being the provision of allotments and playing fields. Although an Act relating to allotments had been passed in 1908.

After the Second World War the National Association of Parish Councils was formed, and by 1952 half of all parishes in the country were members. The Association became a national force and raised the profile and consequently the activity of Parish Councils.

Next issue we investigate  
the ROLE of Parish Councils

